

Narrow Motorized Translation Stages

8MT173

Motorized Translation Stages 8MT173 are created on the basis of 7T173 manual translation stages.

Mechanical parameters of the motorized stages are identical to the parameters of manual **7T173**.

Resolution, speed and load capacity all depend on parameters of the motor, translation stages, as well as on the controller and driving mode a user chooses to use.

For vertical (Z axis) mounting we offer angle bracket **2AB173-20** (page 2-6). Angle brackets of custom design can be manufactured on request.

Two mechanical limit switches built into each translation stage used for emergency stop at ends of travel range or to establish a reference position with accuracy of several motor steps (use **E3** option for more accurate zero position setting, see page 8-1).

Motor position can be visually determined with accuracy of one step by reading a scale engraved on dial knob fitted on motor shaft (use **Encoder** for monitoring exact position using PC).

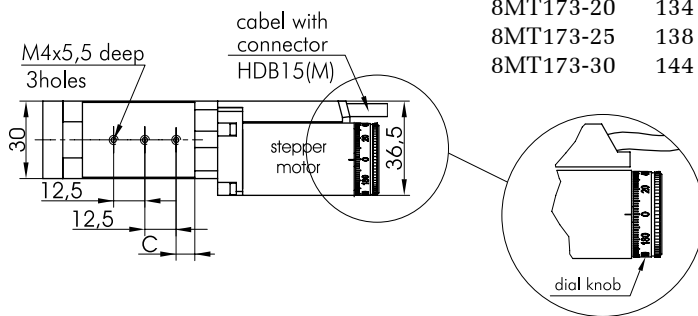
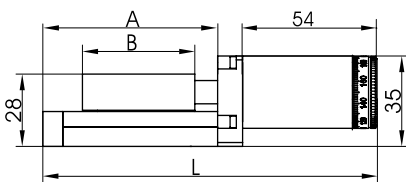
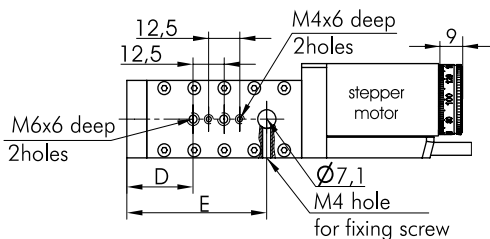
Body and platform of **8MT173** are made of black finished aluminum. Functional parts are made of steel.

- Narrow (30 mm)
- Compact design
- High guide way accuracy
- Lead screw pitch 0.25 mm
- Travel 10, 20, 25, 30 mm
- Optional travel 5, 6, 8 mm and other
- X-Y-Z configurations available

Narrow Motorized Translation Stage with stepper motor

8MT173

Motorized Stages of Higher Speed available on request



Model	L, mm	A, mm	B, mm	C, mm	D, mm	E, mm
8MT173-10	124	60	45	7.5	21.5	49
8MT173-20	134	70	45	7.5	26.5	56
8MT173-25	138	74	49	11	30.5	60
8MT173-30	144	80	55	11.5	36.5	66

SPECIFICATIONS	8MT173-10	8MT173-20	8MT173-25	8MT173-30
Travel range, mm	10	20	25	30
Lead screw pitch, mm		0.25		
Resolution in full step*, μm		1.25		
Max. speed*, mm/s		5		
Load capacity:				
Horizontal, kg		5		
Vertical, kg		2		
Cable		integrated, 1.6 m length		
Motor connector		HDB15(M)		
Stepper motor		28		
Weight, kg	0.43	0.46	0.47	0.48
Assemblies:				
X-Y		2CP173-20		
Z		2AB173-20		

***Test condition:**
 • STANDA controllers;
 • Power supply – 36V.



http://www.standa.it

e-mail: sales@standa.it



Phone: +370-5-2651483

Fax: +370-5-2651474



standa



- Optical Tables 1
- Brackets & Rails 2
- Base Mounts & Accessories 3
- Optical Mounts 4
- Optical Positioners 5
- Base Positioners 6
- Translation & Rotation Stages 7
- Motorized Positioners & Controllers 8
- Fine Adjustment Screws 9
- Opto-Mechanics & Sets 10
- Light Test & Measurement Instruments 11