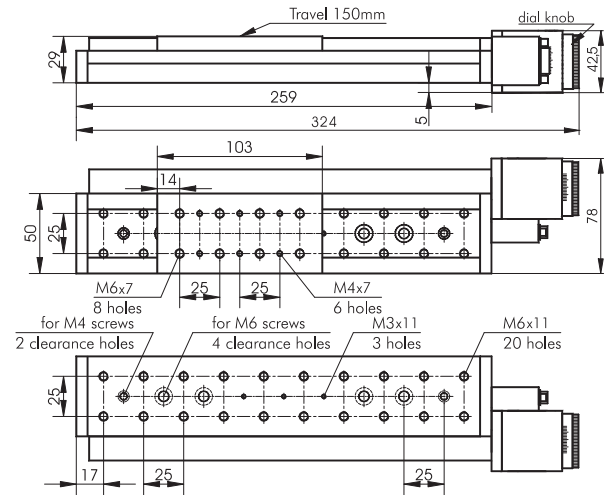


# Translation Stage 8MT175-150

No.....



bottom view

## Specification

### Mechanical

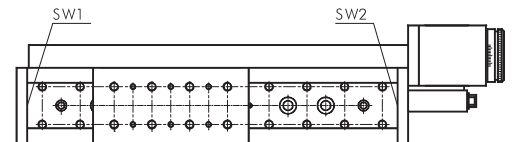
Travel range	150mm
Lead screw pitch	0,5mm
Resolution	2,5 $\mu$ m
Pitch	$\pm 150\mu$ rad
Yaw	$\pm 150\mu$ rad
Unidirectional rep.	0,7 $\mu$ m
Bidirectional rep.	1 $\mu$ m
Accuracy	8 $\mu$ m/100mm
Load capacity:	
Horizontal	8kg
Vertical	3kg
Weight	1,38kg

### Electrical

Motor type	"FL42STH47-1204B"
Steps per revolution	200
Step angle	1,8 $^\circ$
Positional accuracy	0,09 $^\circ$
AMPS/Phase	1,2A
Phase resistance	3,2Ohm
Holding torque	45Ncm

**Limit switches** SW1/SW2-Limit/Home switches

### SW1/SW2-Limit/Home switches



### Wiring diagram

