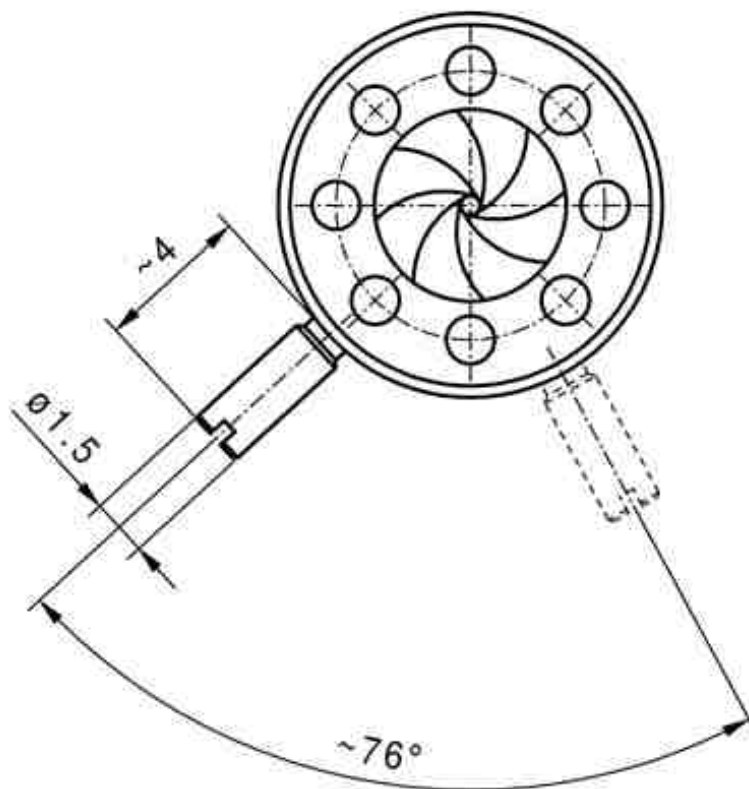


\varnothing	α
5	0,00 °
4	15,24 °
3	32,19 °
2	50,05 °
1	67,57 °
0,5	75,86 °

α	\varnothing
0°	5,00
10°	4,33
20°	3,71
30°	3,13
40°	2,56
50°	2,00
60°	1,44
70°	0,86
75,86°	0,50



min. Apertur $\sim \varnothing 0,5\text{mm}$
 Gewinde Hebel M1,2