

Laser Shelves

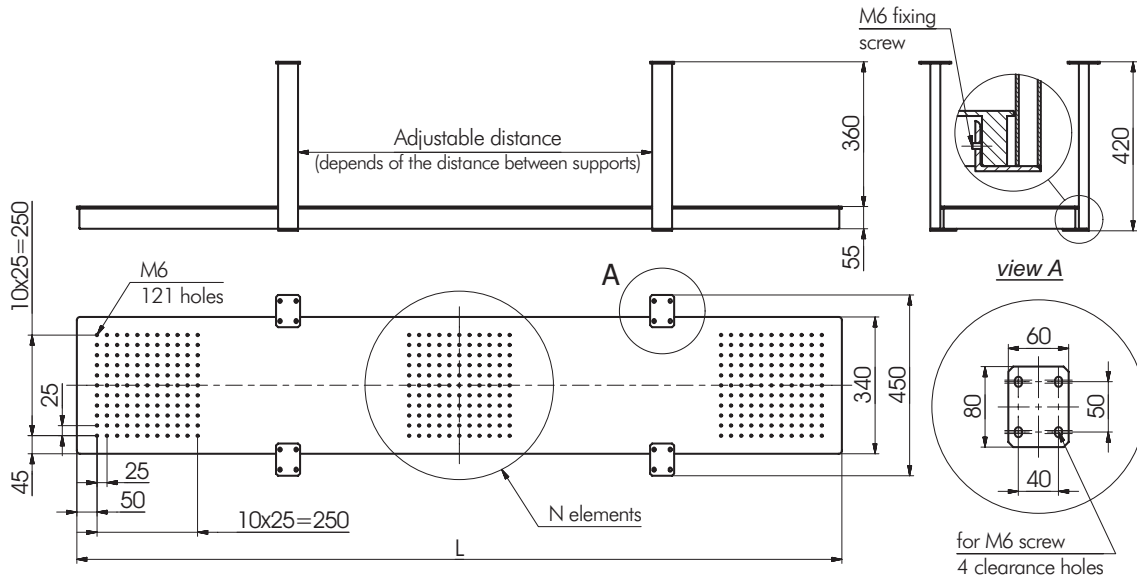
1LS52



1LS52-19

Laser shelves 1LS52 are optional breadboards. They save space when installing a laser and other equipment beneath optical table tops. A shelf stays mechanically coupled to the table top. The shelves have a pattern of **M6** holes.

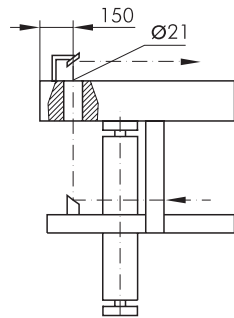
1LS52 has **M6** screws to attach **directly** to the bottom of a table top. So it can be used with any table top, with any support, or vibration isolation. Location of attachment (holes) can be standard, or specified by a customer.



1LS52 attach anywhere – no restrictions.

Model	L, mm	N	Weight, kg	Load capacity, kg
1LS52-09	900	2	26	200
1LS52-19	1900	3	47	200

Shelves of custom sizes are available.



Laser Ports in a **Table Top** are used to let a laser beam or cables through. Standard location of a port is chosen for use with the Laser Shelves **1LS52**.

When ordering, append letter **"H"** to the code of a Honeycomb Table Top e.g. 1HT10-20-20H (see article 1HT).

e-mail: sales@standa.it

www.standa.it

Phone: +370-5-2651474

Fax: +370-5-2651483

standa

- 1 Optical Tables
- 2 Brackets & Rails
- 3 Base Mounts & Accessories
- 4 Optical Mounts
- 5 Optical Positioners
- 6 Base Positioners
- 7 Translation & Rotation Stages
- 8 Motorised Positioners & Controllers
- 9 Fine Adjustment Screws
- 10 Opto-Mechanics & Sets
- 11 Light Test & Measurement Instruments
- 12 Lasers & Laser Accessories