

## 8MID10-40 - Motorized Iris Diaphragm *New!*



8MID10-40 Motorized Iris Diaphragm Mount was developed due to interest in our previously presented motorized iris [8MID98-4](#). Motorized Iris Diaphragm Mount is designed for our smallest diaphragm family, more information about fitted iris diaphragms can be found on [this page](#). Unfortunately it is impossible to interchange iris diaphragms at home since every diaphragm has its own adapter ring and requires calibration.

Temperature limits:

- AR - leaves with AR coating, for temperatures up to 180 °C
- N - springsteel, black finished, for temperatures up to 250 °C
- H - stainless steel, for temperatures up to 400 °C



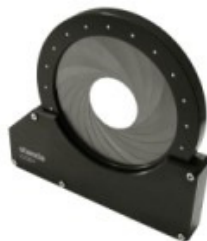
### Related products



Manual irises



Ø30..50 mm motorized irises



Ø98-5 mm motorized iris

### Specifications

<b>Closing speed (min to max)</b>	1.2 seconds
<b>Stepper motor/gear</b>	50:1
<b>Limit switch</b>	2 mechanical
Switch polarity	pushed is closed
<b>Recommended controllers</b>	<a href="#">8SMC1-USBhF</a> <a href="#">8SMC3-RS232</a>

### Models

Model	Diaphragm used	Max. aperture, mm	Min. aperture, mm	Resolution, steps per mm
-------	----------------	-------------------	-------------------	--------------------------

<b>8MID5-0.5-AR</b>	10IBS10-5-0.5-AR	5	0.5	444
<b>8MID5-0.5-N</b>	10IBS10-5-0.5-N	5	0.5	444
<b>8MID7-0.5-AR</b>	10IBS12-7-0.5-AR	7	0.5	308
<b>8MID7-0.5-N</b>	10IBS12-7-0.5-N	7	0.5	308
<b>8MID8-1-N</b>	10IBS14.8-8-1-N	8	1	286
<b>8MID8.2-0.5-N</b>	10IBS14-8.2-0.5-N	8.2	0.5	260
<b>8MID12-1-AR</b>	10IBS19.8-12-1-AR	12	1	182
<b>8MID12-1-H</b>	10IBS19.8-12-1-H	12	1	182
<b>8MID12-1-N</b>	10IBS19.8-12-1-N	12	1	182
<b>8MID14-1-AR</b>	10IBS22-14-1-AR	14	1	154
<b>8MID14-1-N</b>	10IBS22-14-1-N	14	1	154
<b>8MID15-1-H</b>	10IBS24-15-1-H	15	1	143
<b>8MID15-1-N</b>	10IBS24-15-1-N	15	1	143
<b>8MID18-1-AR</b>	10IBS28-18-1-AR	18	1	118
<b>8MID20-1.2-AR</b>	10IBS30-20-1.2-AR	20	1.2	106
<b>8MID20-1.2-H</b>	10IBS30-20-1.2-H	20	1.2	106
<b>8MID20-1.2-N</b>	10IBS30-20-1.2-N	20	1.2	106
<b>8MID22-1.5-N</b>	10IBS33-22-1.5-N	22	1.5	98
<b>8MID25-1.5-N</b>	10IBS37-25-1.5-N	25	1.5	85
<b>8MID27-1.5-AR</b>	10IBS40-27-1.5-AR	27	1.5	78
<b>8MID27-1.5-H</b>	10IBS40-27-1.5-H	27	1.5	78
<b>8MID27-1.5-N</b>	10IBS40-27-1.5-N	27	1.5	78